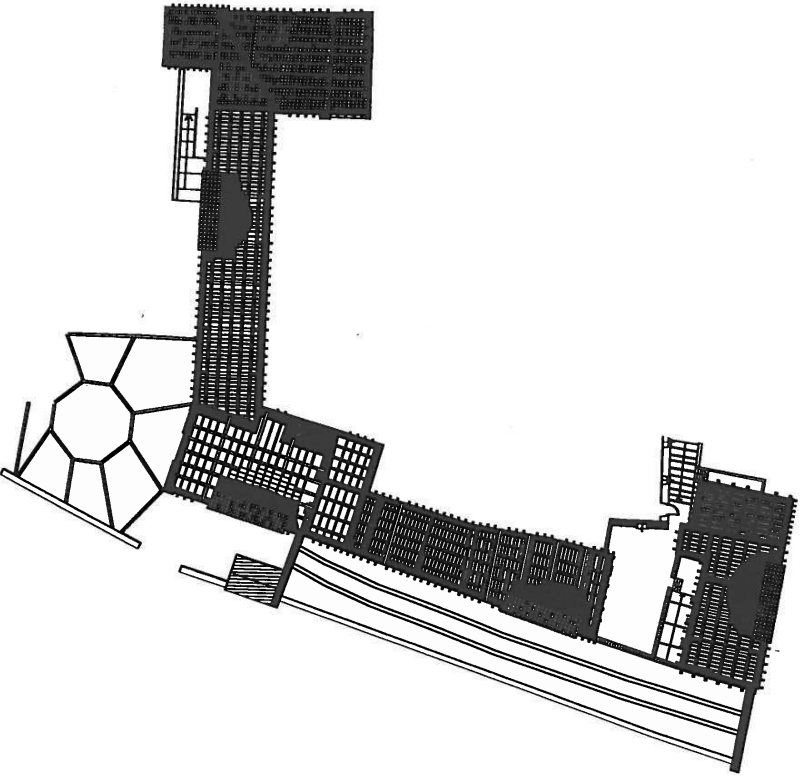












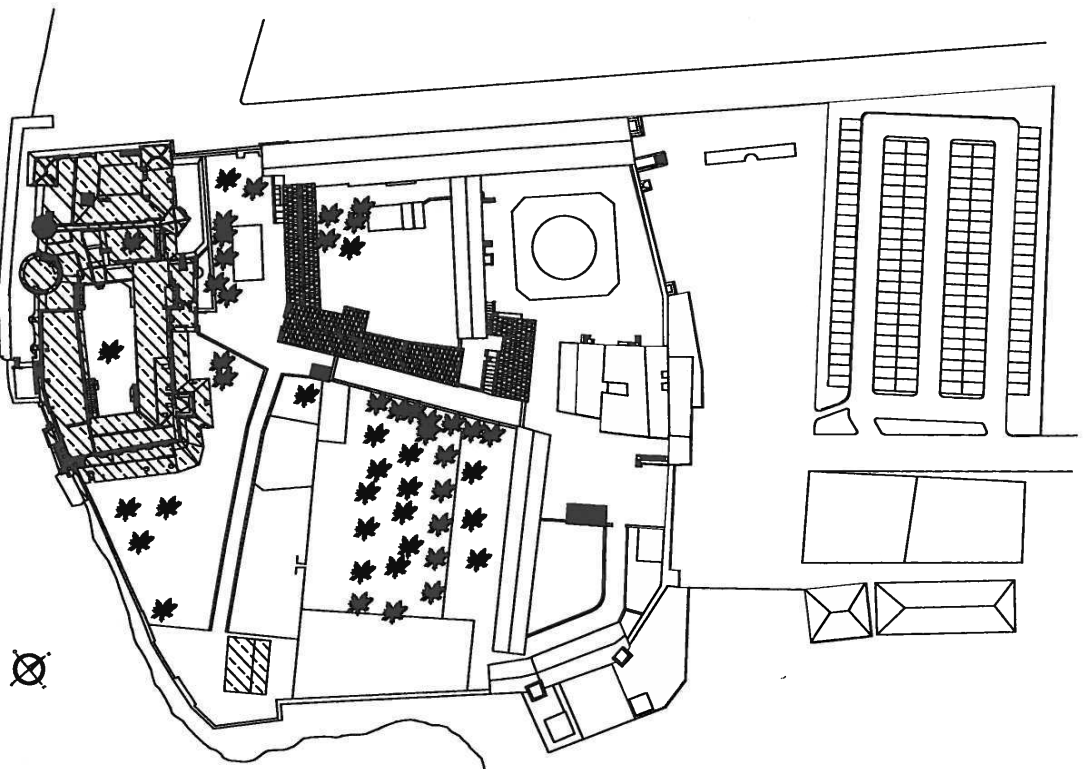


Pianta Piano Coperture

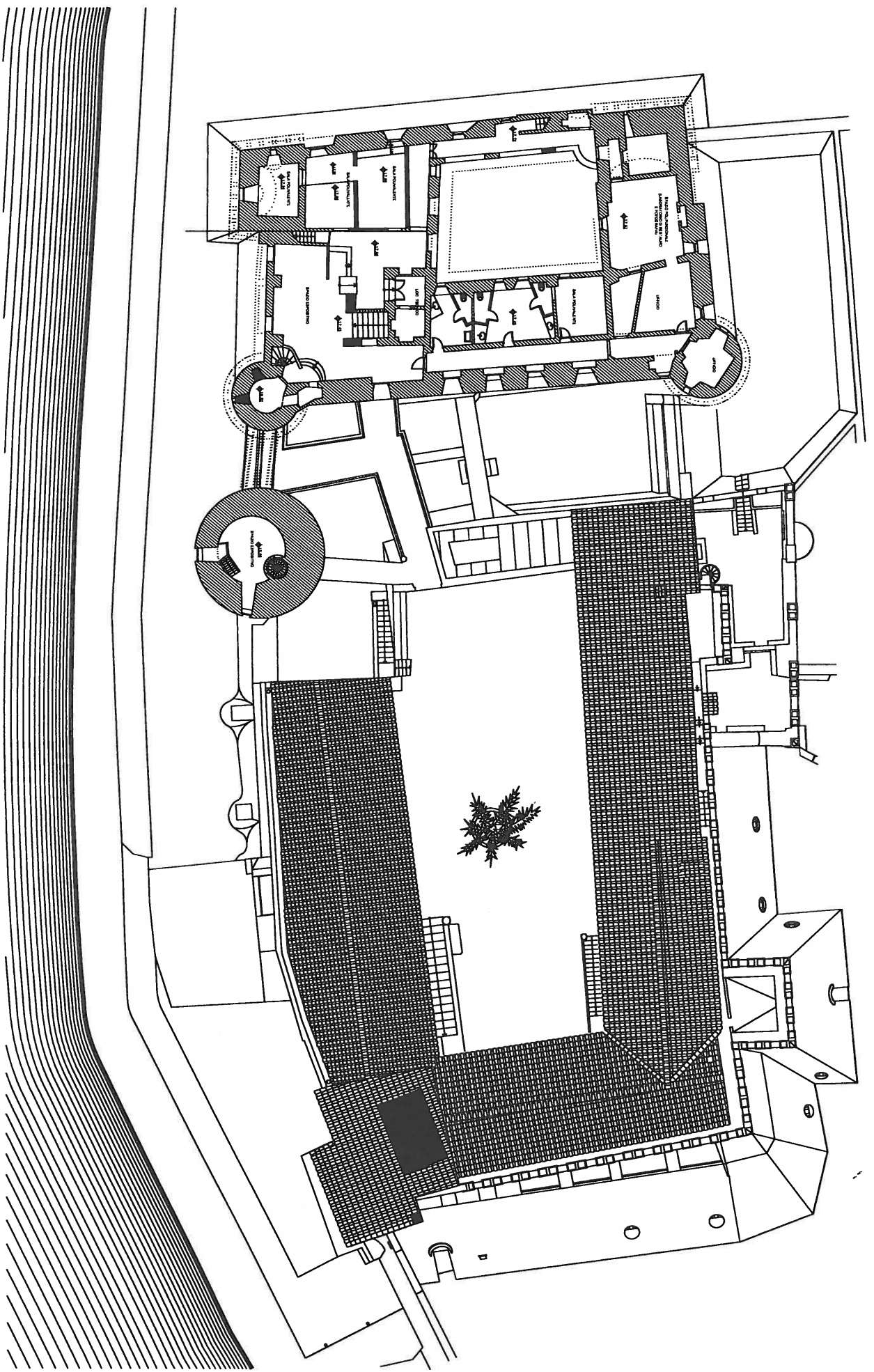


- LEGENDA**
-  **MURATURE STORICHE O STORICIZZATE**
 -  **STRATI DELLA STRUTTURA DI COPERTURA**
 -  **RESTAURO STRUTTURA IN LEGNO ESISTENTE**
(ove necessario al portino in opera travicelli nuovi per accogliere piastrelle in luogo di tavelle)
 -  **PANELLE 20X20X3 cm o travicello**
 -  **TAVELLE 12X8X2,5 o travicello**
 -  **STRUTTURA IN LEGNO INCROCCIA CON SOVRASISTANTE TAVOLATO CONTINUO**
 -  **STATO DI SCOPRIMENTO CON TESSUTO NON TESSUTO**
 -  **RETE ANTI FESSURAZIONE**
 -  **MALTA DI CALCE IDRAULICA SABRIA E POZZOLANA sp. 5cm**
 -  **CLAUVA**
 -  **TESOLE**
 -  **EDIFICI STIPOLCANTI TOTALMENTE DALL'APPALTO**

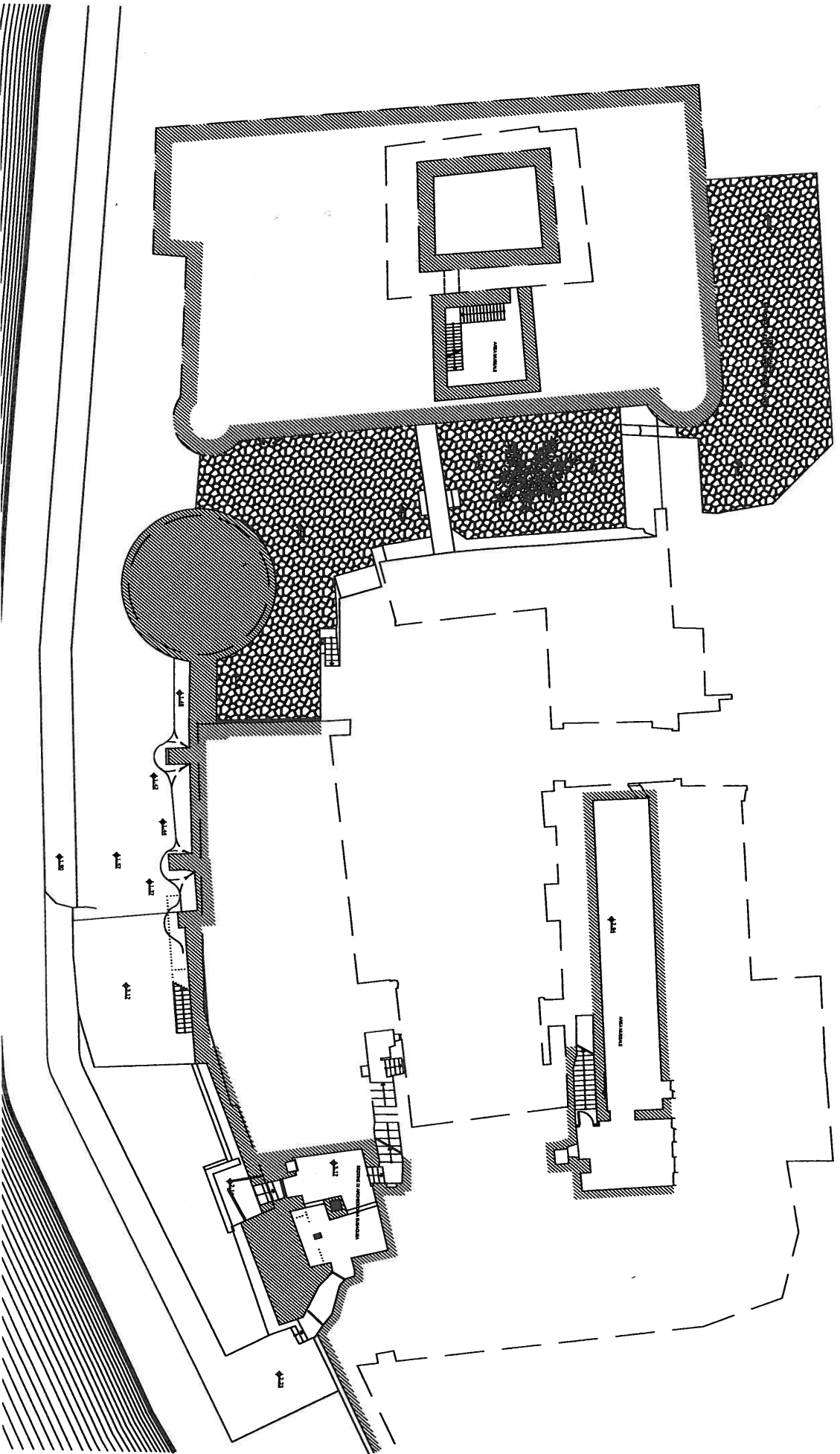
QUADRO D'INSIEME - ZONA CASTELLO E CORTE



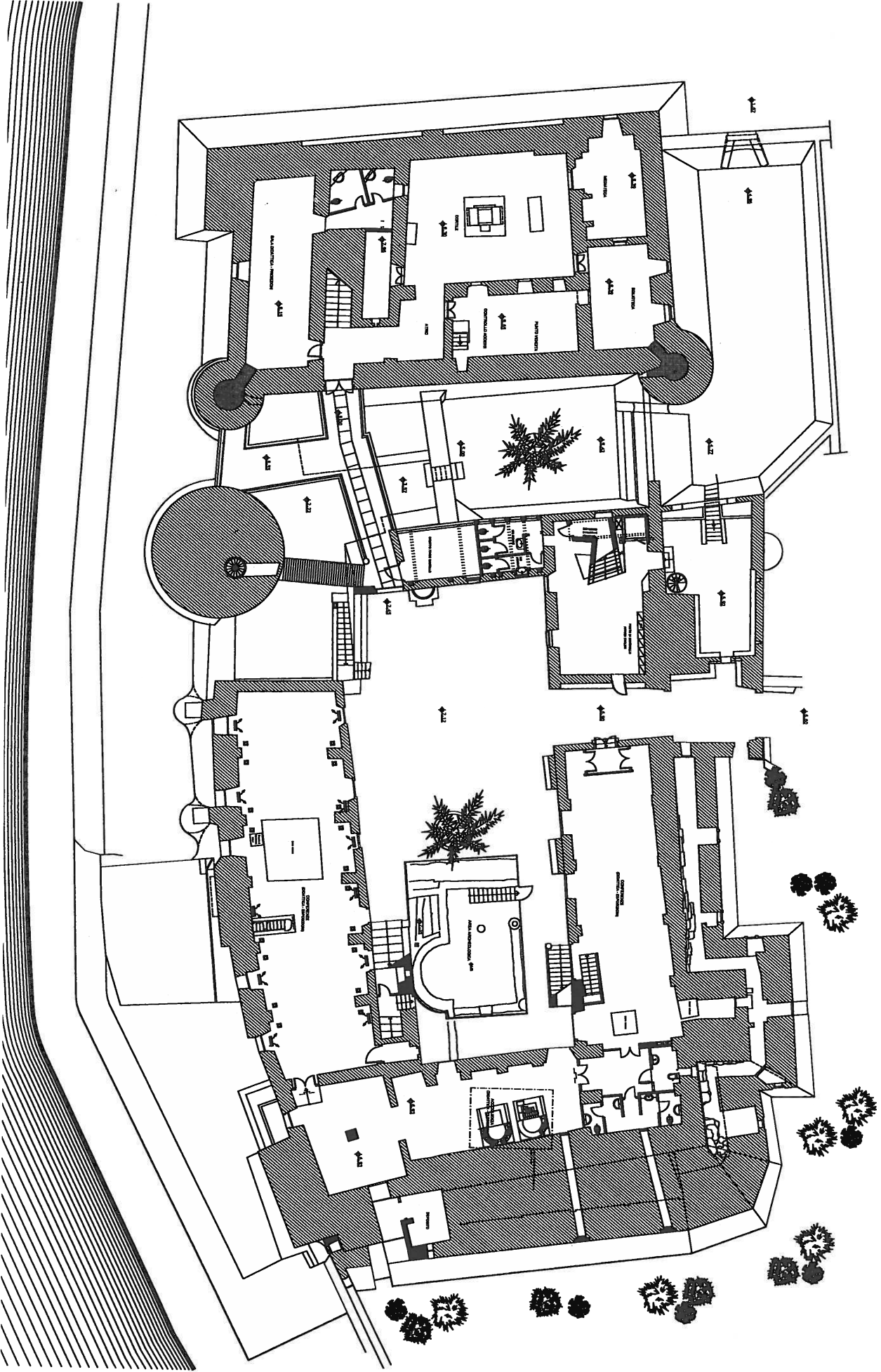
Pianta Piano Secondo Castello - Pianta Piano Copertura Corte



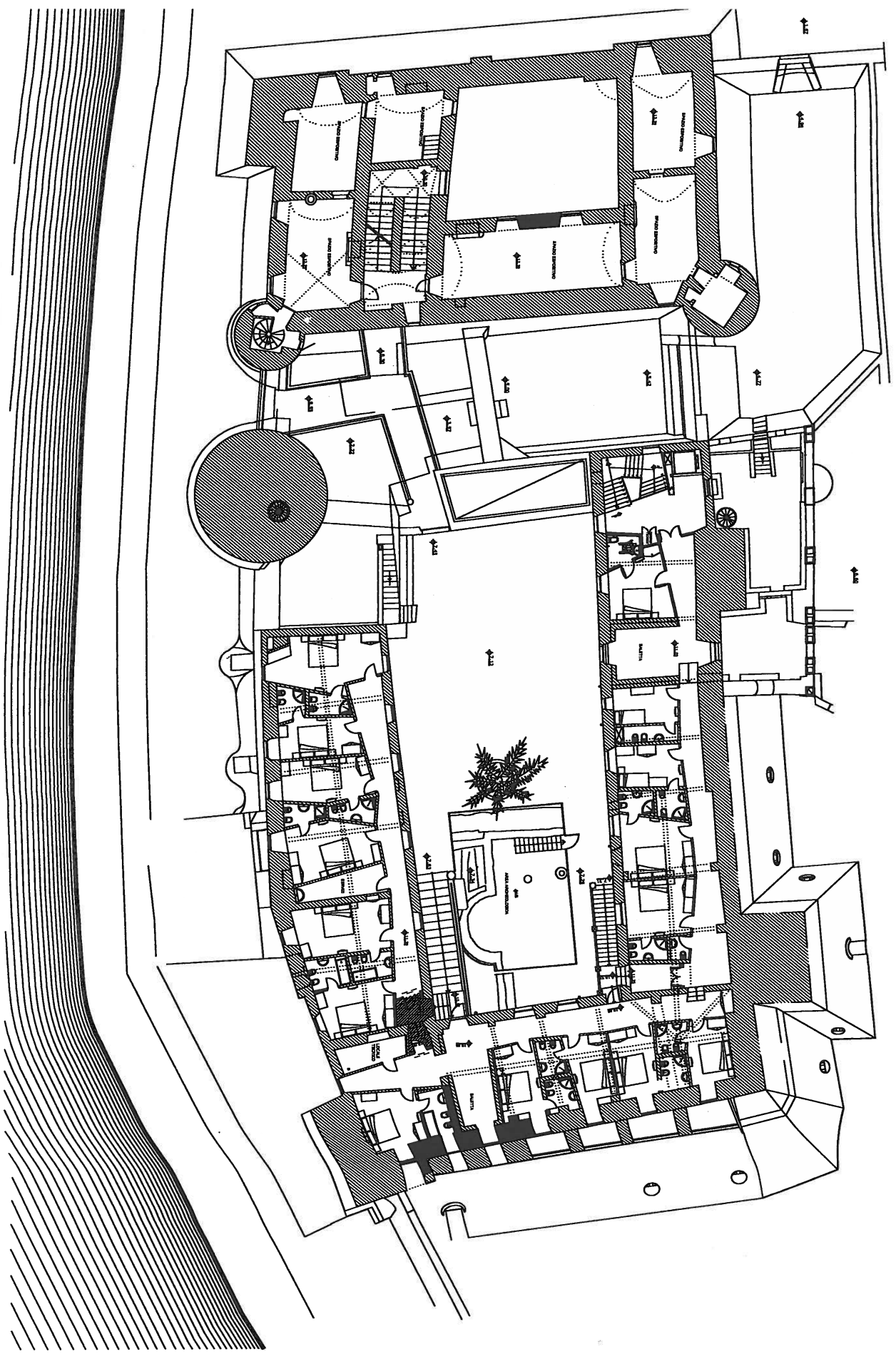
Pianta Piano Interrato



Pianta Piano Terra

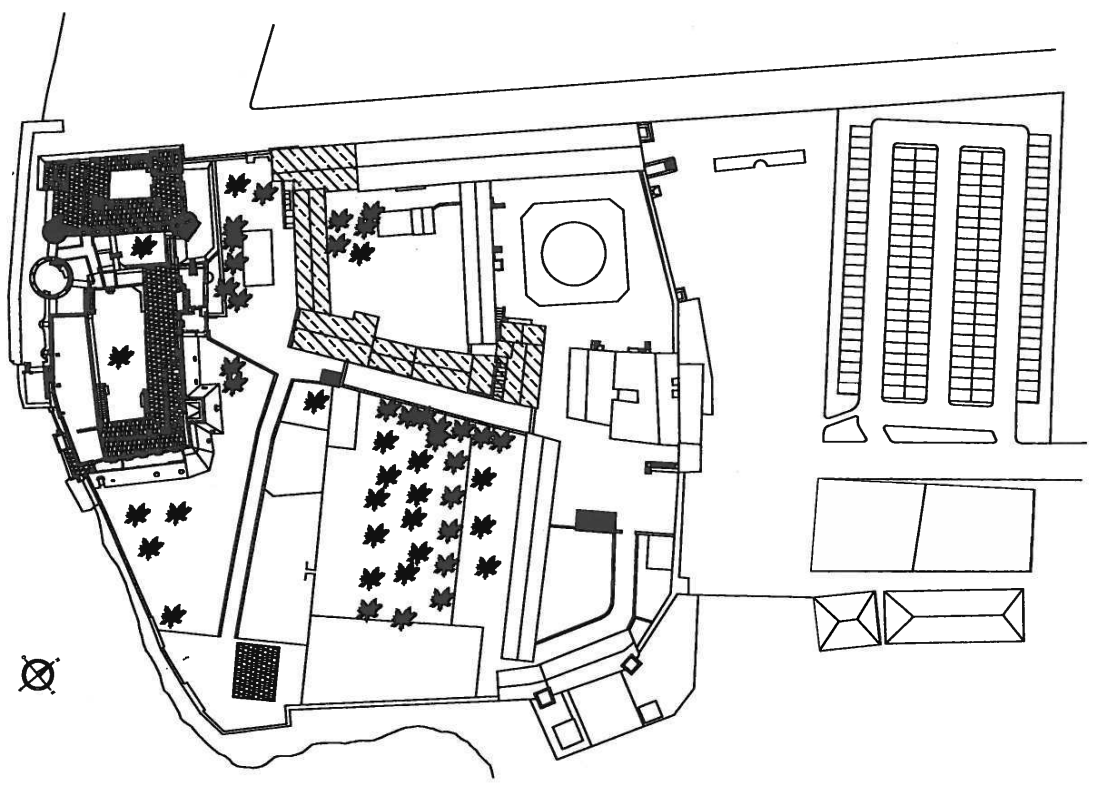


Pianta Piano Primo

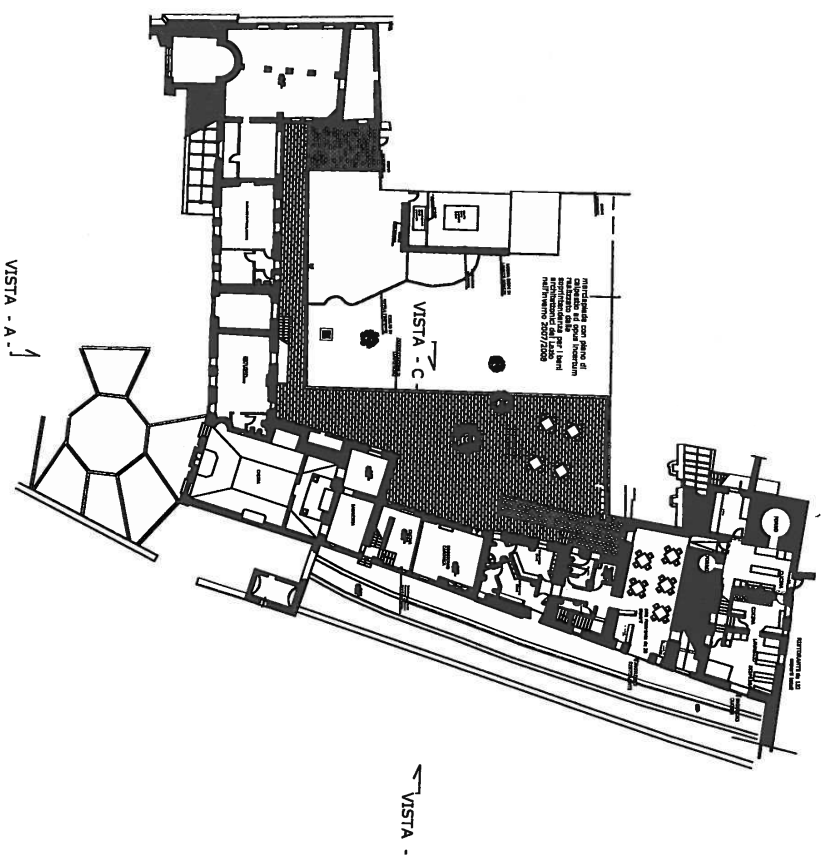


QUADRO D'INSIEME - ZONA CORTILE DELLA CANONICA

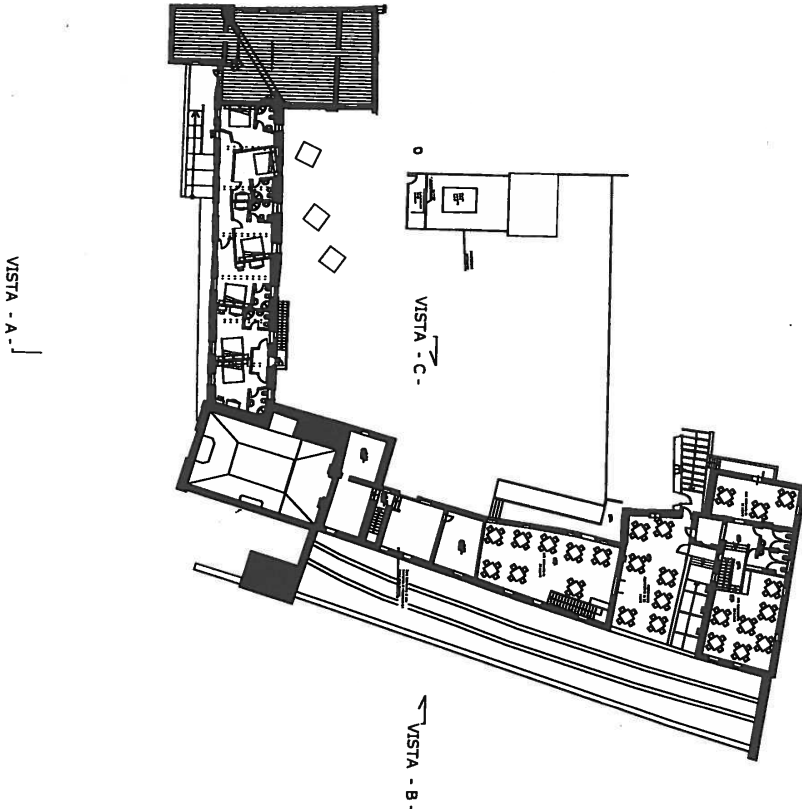
Variante n° 1 Contratto del 16/03/07 Rep.9692



Pianta Piano Terra



Pianta Piano Primo



- B -

Pianta Piano Coperture

- LEGENDA**
- MURATURE STORICHE O STORICIZZATE
 - STRATI DELLA STRUTTURA DI COPERTURA
 - RESTAURIO STRUTTURALE IN LEGNO ESISTENTE (con massiccio al portante in opere travate per accogliere pilastri in luogo di tavelle)
 - PANNELLE 20X20X3 cm o tavolaio
 - TAVELLE 12x28x2,5 o tavolaio
 - STRUTTURALE IN LEGNO INCROCIATA CON SPINA
 - STATO DI SCORRIMENTO CON TESSUTO NON
 - RETE ANTI FESSURAZIONE
 - MALTA DI CALCE IDRAULICA SABBIA E POZZO
 - GIUNTA
 - TEGOLE
 - EDIFICI STRALCIATI TOTALMENTE DALL'APPALTO

